

PROTECT-CH

Prophylactic Therapy in Care Homes Trial

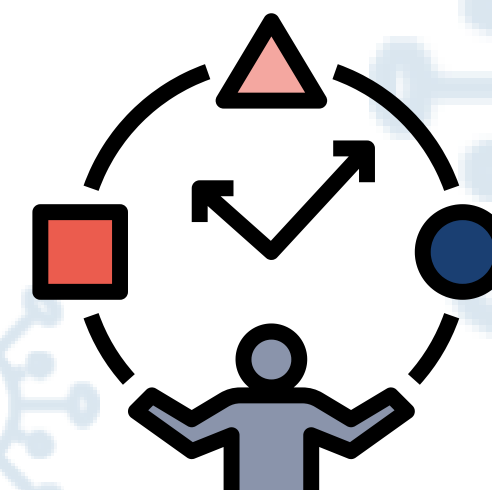
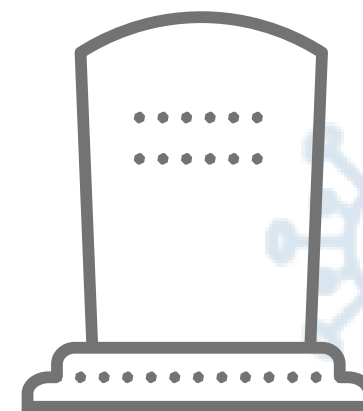
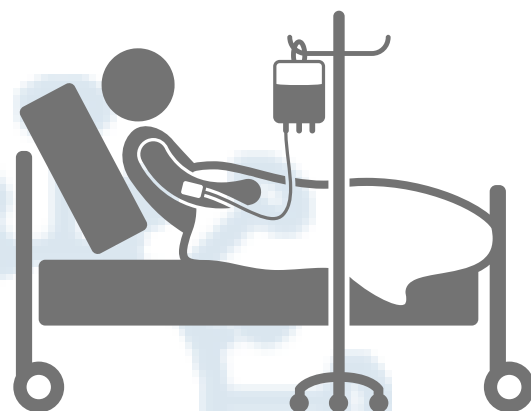
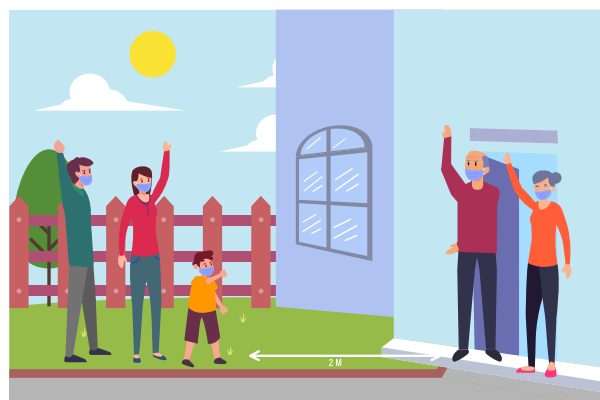
**Background
to trial**

Purpose of Training

To provide an overview of the PROTECT-CH trial,
and why it is still important in the era of vaccines.

Impact of COVID-19 on Care Homes

- Major cause of illness
- Major cause of disability
- Major cause of death
- Major impact on normal care and life in the home
- Limits visits from family and friends
- Impacts on quality of life and mental health of residents and staff



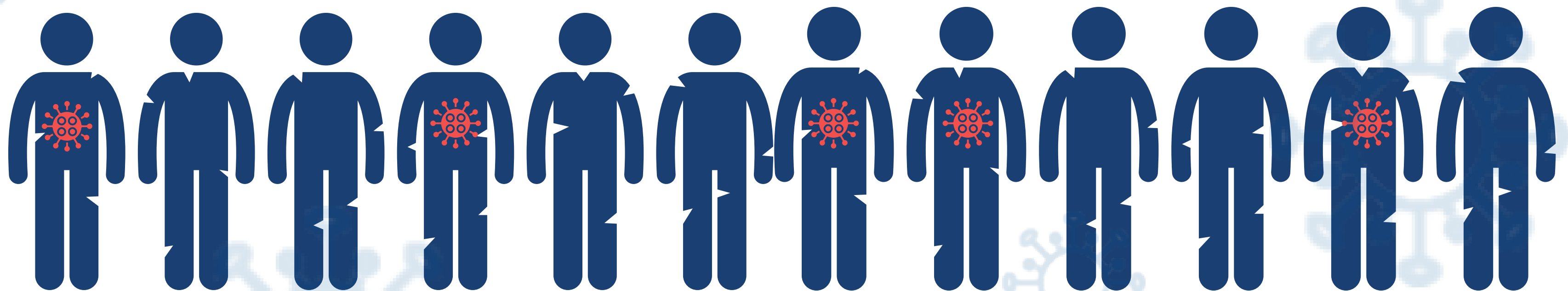
Most UK care homes have had at least one resident or staff member test positive for COVID-19



At least

40,000

Care home residents have
died with COVID-19



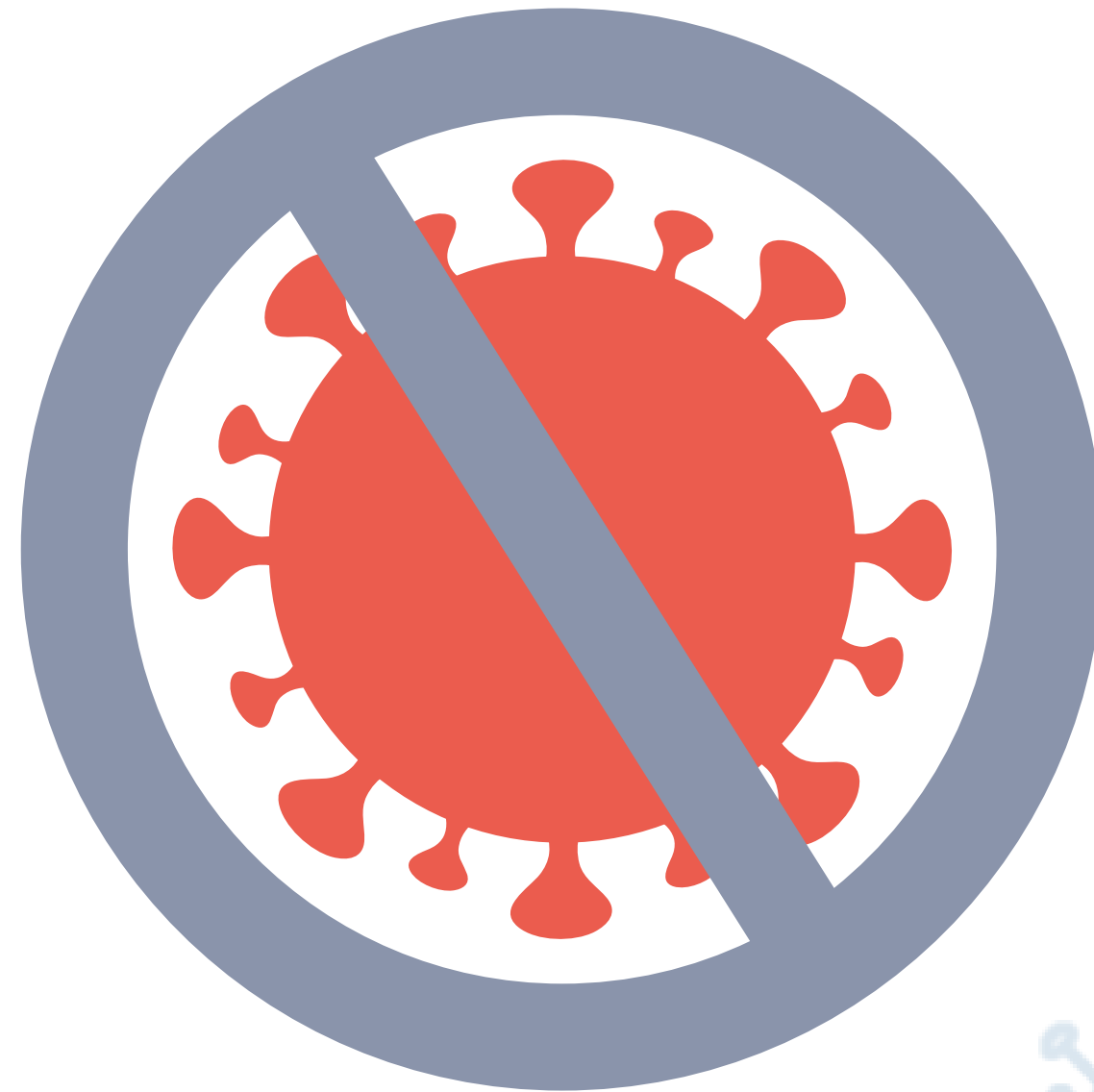
There is some
good news though...

The COVID-19 vaccination programme
has started in the UK
and all eligible care home residents
have been offered vaccinations



However...

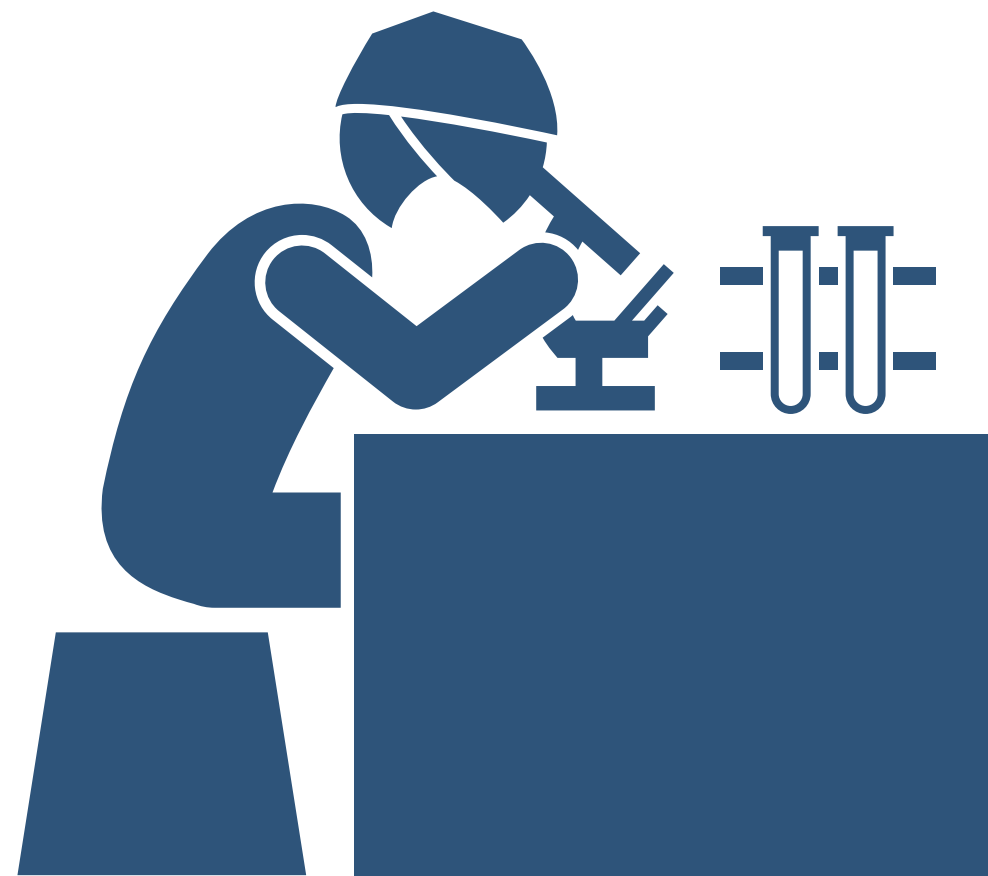
The vaccine may not stop infection completely for a variety of reasons:



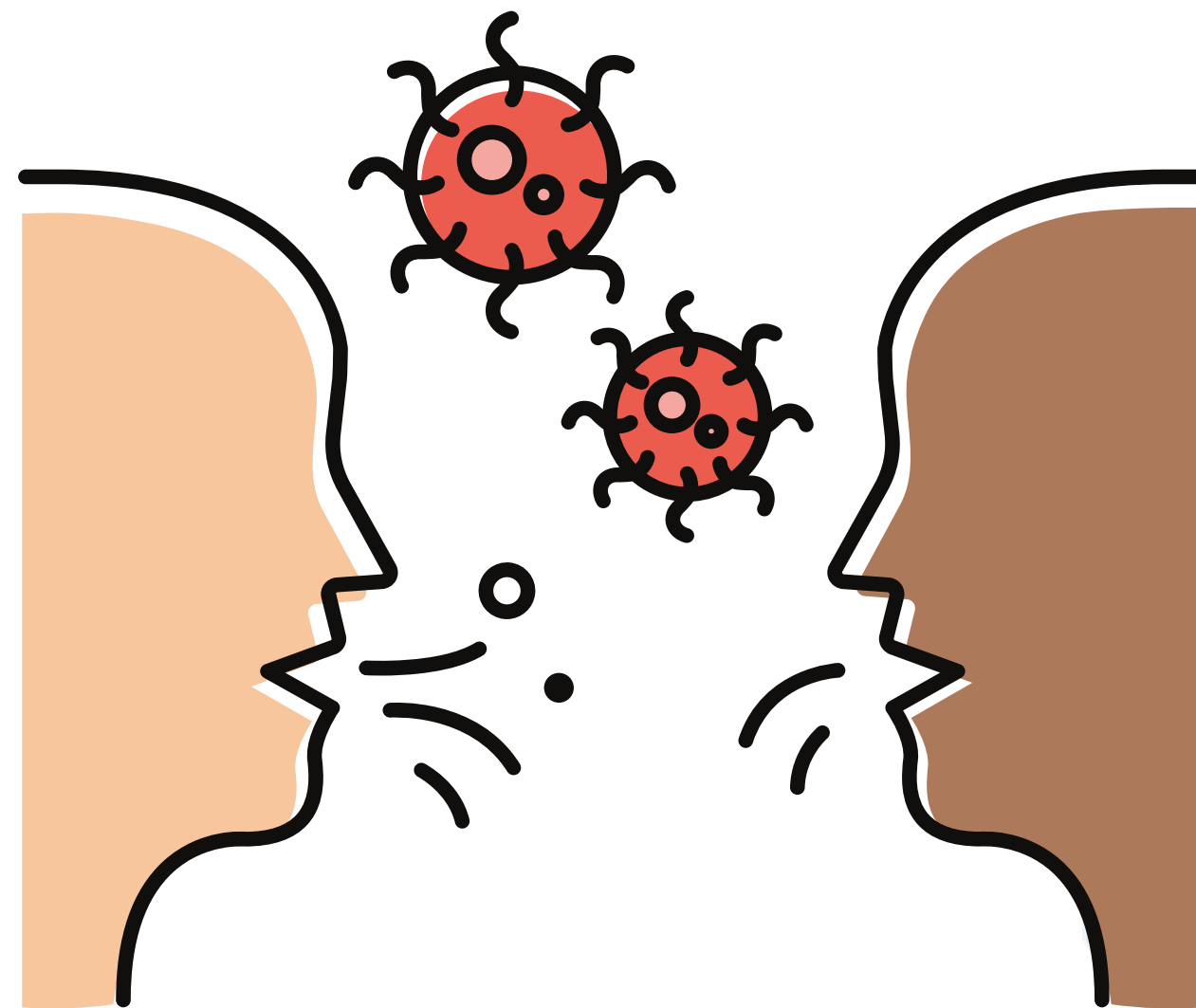
No vaccine is 100% effective

Trials have shown that the vaccine protects between 60%-95% of people against getting COVID-19

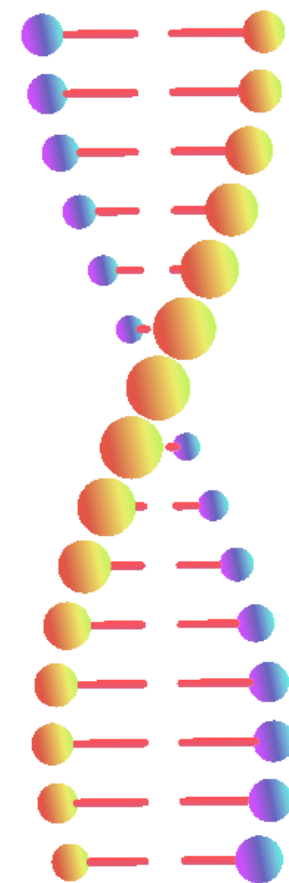
However, the trials didn't include people over 80



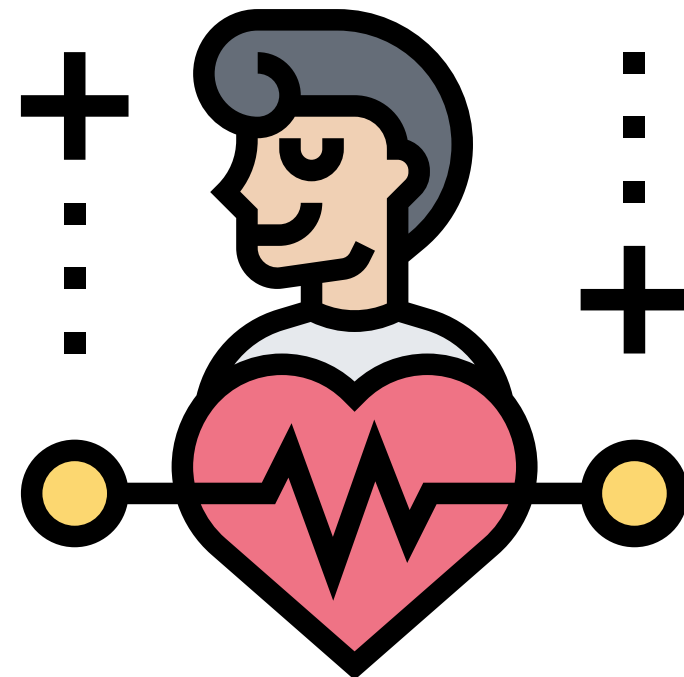
Vaccines may not completely stop the virus being passed on



Some new variants of the virus may be
more resistant to existing vaccines



So we still need to find
ways to stop the virus being passed on
and reduce the severity of the disease
to keep care home residents safe



PROTECT-CH

Prophylactic Therapy in Care Homes Trial

The PROTECT-CH trial has
been set up to test several medications
to see if they:

Reduce the
number of
residents
infected with
COVID-19

AND

Reduce the
severity of the
disease and
deaths of
residents from
COVID-19

It is an Urgent Public Health trial
which has been funded by
the National Institute for Health Research
and is managed by the
University of Nottingham



University of
Nottingham
UK | CHINA | MALAYSIA

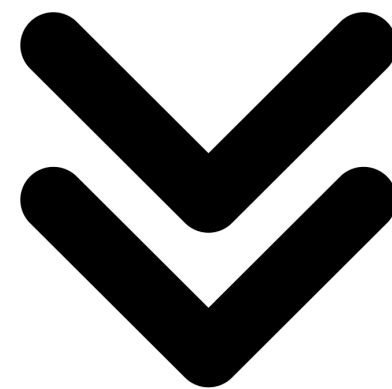
FUNDED BY

NIHR | National Institute
for Health Research

Approximately 750 care homes in
England, Northern Ireland, Scotland and Wales
will be involved



**which is more than
22,000 care home residents!**



**The Government's independent
medical and scientific advisers are recommending
which medications they want us to test**

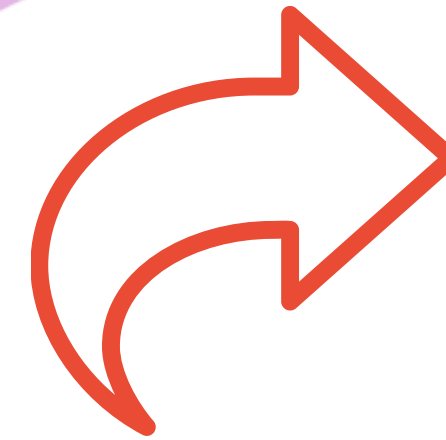


The medications that will be tested will either be:



PRE-EXPOSURE:
These will be given
before an outbreak
of COVID-19 occurs
at a care home

OR



POST- EXPOSURE:
These will be given
after an outbreak
of COVID-19 occurs
at a care home

Residents who agree to take part
will be allocated as a group
to take either:

A treatment
which aims to
reduce
transmission and
seriousness of
COVID-19
(plus standard care)



OR

Standard care
(No trial medication)

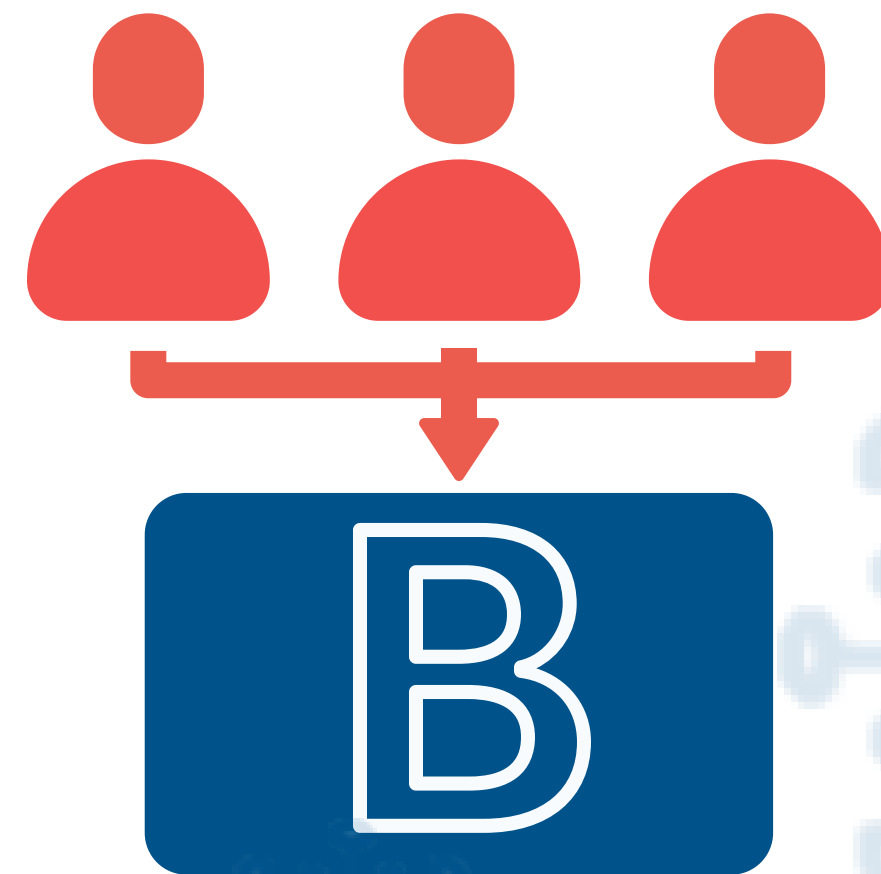


This is
chosen at random by a computer
(like a toss of a coin)

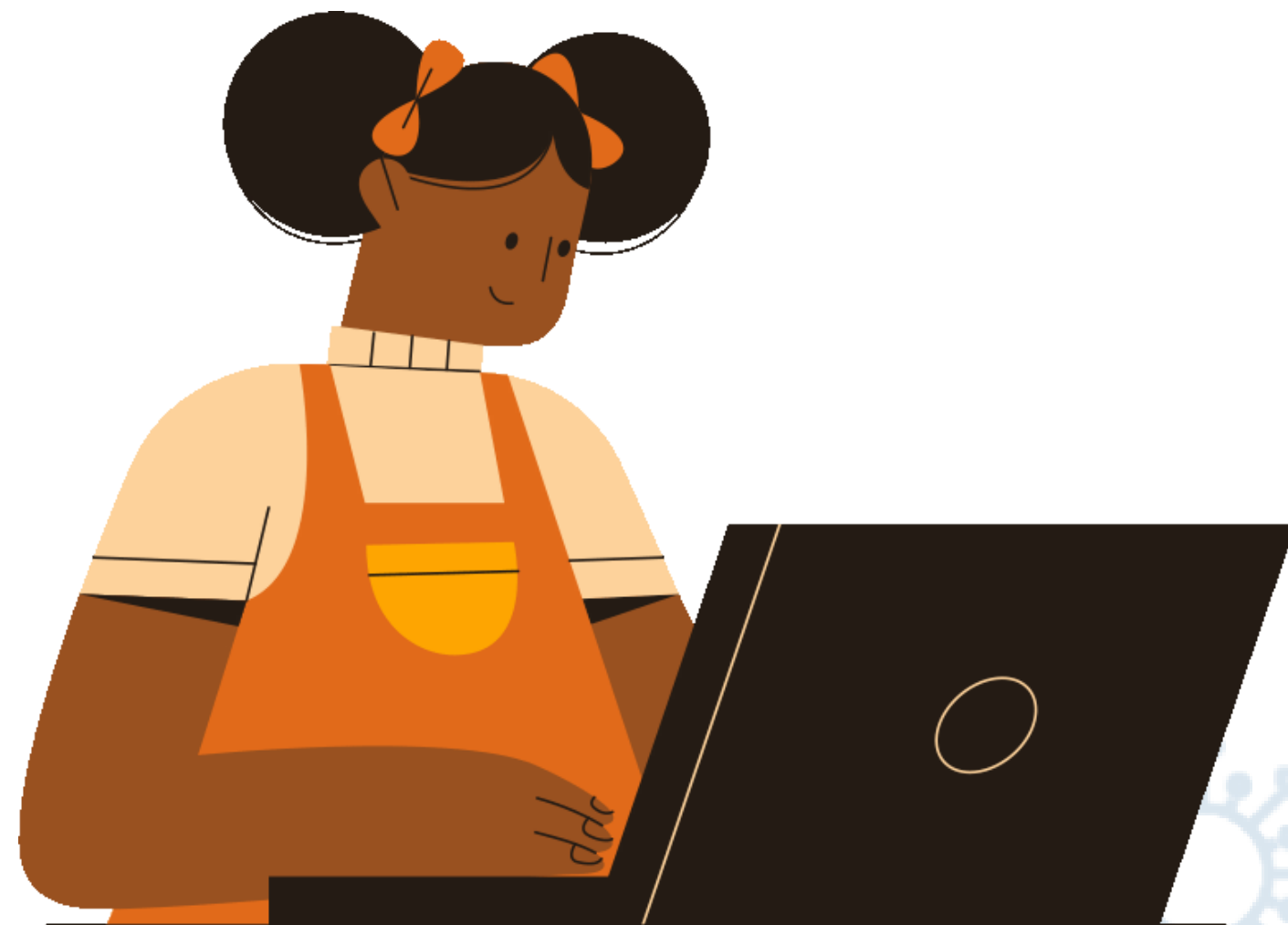


All residents involved in the trial at a care home will be in the same group

A



Trained care home staff will be asked to collect information about the residents and enter it into the secure trial database



This information will help
answer the research question...

Which trial medications given to
prevent COVID-19 infection
within a care home
are the most effective
compared to standard care?



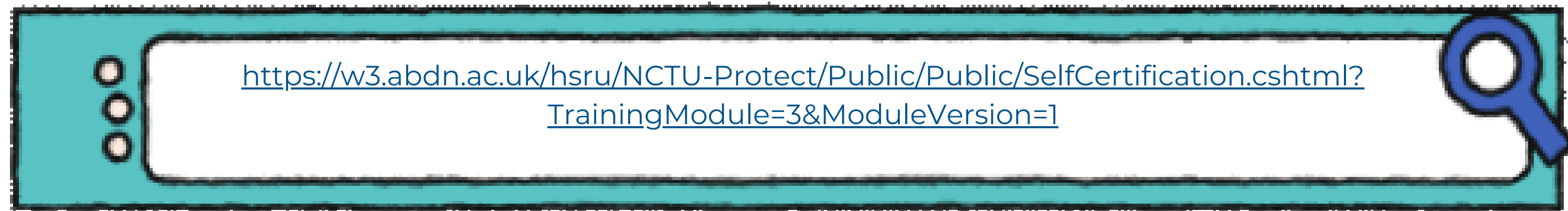
Thank you for watching!

You have now completed the
Background to trial
Training Module



Please remember to complete your self assessment form
to confirm you have undertaken this training

This can be found at:

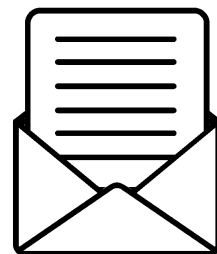


Or you can access it via
mobile here:





Please get in touch with us
if you have any questions:



protect-trial@nottingham.ac.uk



0115 74 87710

*Thank
you*